



Series S302

Numeric large size displays
with PROFINET interface

Operating instructions

1 Contact

www.siebert-group.com

GERMANY

Siebert Industrieelektronik GmbH
Siebertstrasse, D-66571 Eppelborn
Phone +49 (0)6806 980-0
email: info.de@siebert-group.com

AUSTRIA

Siebert Österreich GmbH
Simmeringer Hauptstrasse 24, A-1110 Wien
Phone +43 (0)1 74040153
email: info.at@siebert-group.com

FRANCE

Siebert France Sarl
4 rue de l'Abbé Louis Verdet, F-57200 Sarreguemines
Phone +33 (0)3 87 98 63 68
email: info.fr@siebert-group.com

ITALY

Siebert Italia Srl
Via Galileo Galilei 2A, I-39100 Bolzano (BZ)
Phone +39 (0)471 053753
email info.it@siebert-group.com

THE NETHERLANDS

Siebert Nederland B.V.
Jadedreef 26, NL-7828 BH Emmen
Phone +31 (0)591-633444
email: info.nl@siebert-group.com

SWITZERLAND

Siebert AG
Bützbergstrasse 2, CH-4912 Aarwangen
Phone +41 (0)62 922 18 70 (german)
+41 (0)62 922 20 44 (french)
+41 (0)62 922 28 38 (italien)
email: info.ch@siebert-group.com

2 Legal note

© Siebert Industrieelektronik GmbH

This operation manual has been prepared with the utmost care. However, we do not accept any liability for possible errors. We always appreciate your suggestions for improvement, corrections, comments and proposals. Please contact us: editing@siebert-group.com

Siebert[®], LRD[®] and XC-Board[®] are registered trademarks of Siebert Industrieelektronik GmbH. All other product names mentioned herein may be trademarks or registered trademarks of their respective owners.

We reserve the right to make alterations to the technical data and delivery options without notice. - All rights reserved, including the rights of translation. No part of this document may in any form or by any means (print, photocopy, microfilm or any other process) be reproduced or by using electronic systems be processed, copied or distributed without our written permission.

Table of contents

| | |
|---|-----------|
| 1 Contact | 2 |
| 2 Legal note | 3 |
| 3 Safety precautions | 6 |
| Important information | 6 |
| Safety | 6 |
| Intended use..... | 6 |
| Mounting and installation..... | 6 |
| Grounding..... | 6 |
| EMC measures..... | 6 |
| Disposal and return of old devices | 7 |
| 4 Model designation | 8 |
| Model designation | 8 |
| Unit construction..... | 8 |
| 5 Quick start for numerical operation mode (INT32 format) | 9 |
| Step 1: Open project | 9 |
| Step 2: Switch to project view | 9 |
| Step 3: Install the GSDML file of the ad and add the display..... | 9 |
| Step 4: Establish a connection to the display..... | 10 |
| Step 5: Add sub-module to the display and define address range | 10 |
| Step 6: Assign a PROFINET device name to the display | 11 |
| Step 7: Download configuration in the controller..... | 11 |
| Step 8: Transmit data to the display..... | 12 |
| 6 Quick start for alphanumeric operation mode (ASCII format) | 13 |
| Step 1 to 4: See quick start for numeric operation mode (INT32 format) | 13 |
| Step5: Add sub-module to the display and define address range | 13 |
| Step 6 and 7: See quick start for numeric operation mode (INT32-Format)..... | 13 |
| Step 8: Transmit values and texts to the display..... | 13 |
| 7 Messages on the display | 15 |
| 8 Further settings | 16 |
| 9 Setting the display settings during initialization (numeric operation mode only) | 17 |
| Decimal points Decimal Dots (property number 1) | 17 |
| Offset, scale factor (multiplier) and divisor (property numbers 2, 3 and 12) | 17 |
| Threshold values Range (property numbers 4 und 5) | 17 |
| Flags (property number 6)..... | 18 |
| Attributes for flashing and blinking (property numbers 7 and 9) | 18 |
| Format (property numbers 10 and 11) | 18 |

| | |
|---|-----------|
| 10 Flashing modes and display attributes | 19 |
| 11 Flags | 20 |
| 12 Setting the display mode in normal operation | 21 |
| Setting the basic brightness (luminosity of the LEDs) | 21 |
| Setting of the display modes | 22 |
| 13 Technical data | 23 |
| Fieldbus | 23 |
| Power supply | 23 |
| Housing colors | 23 |
| Ambient conditions | 23 |
| Unit properties | 23 |
| Max. power consumption | 25 |
| Dimensions and weights | 26 |

3 Safety precautions

Important information

Read these operating instructions before using the device. It contains important information on the use, safety and maintenance of the device. This helps you to protect yourself and prevent damage to the device.



Instructions that may lead to death, personal injury or considerable material damage if they are not followed or not followed correctly are highlighted by the warning triangle shown here.

The operating instructions are intended for trained professional electricians familiar with the safety standards of electrical technology and industrial electronics. The manufacturer is not liable if the information in these operating instructions is not complied with.

Store these operating instructions in an appropriate place.

Safety



Components inside the devices are energized with electricity during operation. For this reason, mounting and maintenance work may only be performed by qualified personnel in accordance with the relevant safety regulations.

The repair and replacement of components and modules may only be carried out by the manufacturer for safety reasons and due to the required compliance with the documented unit properties.

The devices do not have a power switch. They are in operation immediately after the operating voltage is applied.

Intended use

The devices are intended for use in industrial environments. They may only be operated within the limit values stipulated by the technical data.

When configuring, installing, maintaining and testing the devices, the safety and accident-prevention regulations relevant to use in each individual case must be complied with.

Trouble-free, safe operation of the units requires proper transport, storage, installation, mounting and careful operation and maintenance of the devices.

Mounting and installation

The attachment options for the units were conceived in such a way as to ensure safe, reliable mounting.



The user must ensure that the fastening material used, the device carrier and the anchoring at the unit device are sufficient for secure mounting under the given on-site conditions.

The devices are to be mounted in such a way that they can be opened up while mounted. Sufficient space for the cables must be available in the unit near the cable entries.

Sufficient space is to be kept clear around the devices to ensure air circulation and to prevent the build-up of heat resulting from use. The relevant information must be heeded in the case of units ventilated by other means.



When the housing fasteners are opened, the front frame of the housing hinges out upward or downward (depending on the unit version) automatically.

Grounding

All devices are equipped with a metal housing. They comply with safety class I and require a protective earth connection. The connecting cable for the operating voltage must contain a protective earth wire of a sufficient cross section (DIN VDE 0106 part 1, DIN VDE 0411 part 1).

EMC measures

The devices comply with the current EU Directive (EMC Directive) and provide the required interference immunity. Observe the following when connecting the operating voltage and data cables:

Use shielded data cables.

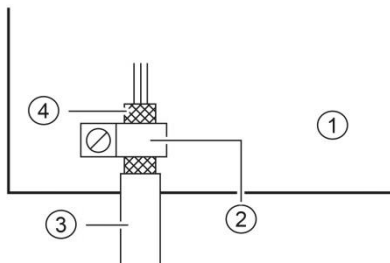
The data and operating voltage cables must be laid separately. They may not be laid together with heavy-current cables or other interference-producing cables.

The cable thickness must be properly assessed (DIN VDE 0100 Part 540).

The cable lengths inside the units are to be kept as short as possible to prevent interference. This applies especially to unshielded operating voltage cables. Shielded cables are also to be kept short due to any interference which might be emitted by the shielding.

Neither excessively long cables nor cable loops may be placed inside the units.

The connection of the cable shielding to the functional ground (PE) must be as short and low-impedance as possible. It should be made directly to the mounting plate over a large area with a conductive clip:



- | | |
|------------------|--------------------|
| ① mounting plate | ② conductive clamp |
| ③ data lines | ④ cable shielding |

The cable shielding is to be connected at both cable ends. If equipotential bonding currents are expected due to the cable arrangement, electrical isolation is to be performed on one side. In this case, capacitive connection (approx. $0.1\mu\text{F}/600\text{ V AC}$) of the shielding on the isolated side must occur.

Disposal and return of old devices



Dispose the packing in an environmentally friendly manner. This device is subject to the European directive on waste electrical and electronic equipment (WEEE). The directive provides the framework for the EU-wide take-back and recycling of old appliances. Enquiries therefore should be sent by e-mail to the following e-mail address: info@siebert-group.com

Units or unit parts which are no longer needed are to be disposed of in accordance with the regulations in effect in your country. Personal data on the old appliances to be disposed of must be deleted by the user.

4 Model designation

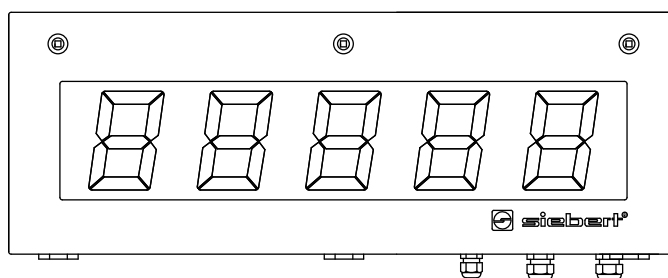
Model designation

This manual applies to units with the following model designation (x = the 'x's in the model designation indicate the size and design of the units):

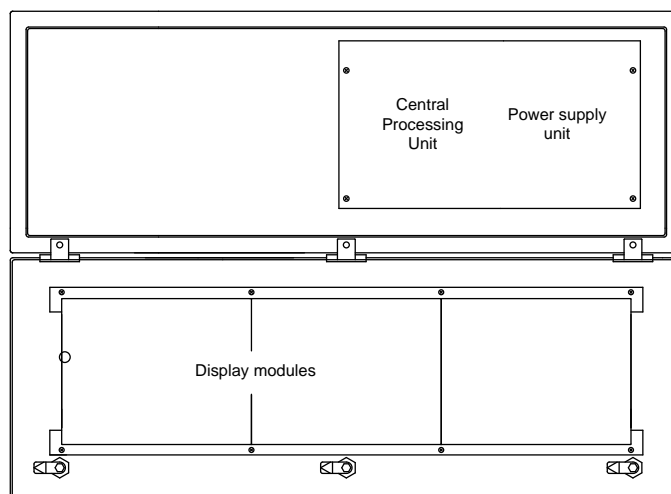
S302-xx/xx/xx-xxx/xx-N0

Unit construction

The following figure shows model type S302-05/10/xx-xxx/xx-xx as example for the other model types. The front frame of the housing is locked with quick-action releases. When opening the unit the front frame hinges downward.



The following figure shows the unit when open.



Units with double-sided display show the same information on the front and on the rear side.

5 Quick start for numerical operation mode (INT32 format)

The display is put into operation with the following steps. The display then shows the values sent via PROFINET.

The screenshots were created with the following hardware and software. For other engineering frameworks, the descriptions shown in this user's guide may differ from the screen display on your device.

| | |
|-----------------------|---|
| Display | XC-Board |
| Engineering-Framework | Siemens TIA Portal V13, Service Pack1 , Update 9 |
| SPS | Siemens S7-1513-1 PN |
| Operating system | Microsoft Windows 7 Professional, 64 Bit, English |

The quick start describes the parameterization of the display. Operation of the TIA Portal is required. The devices are delivered with the PROFINET name 'siebert-display'.

Step 1: Open project

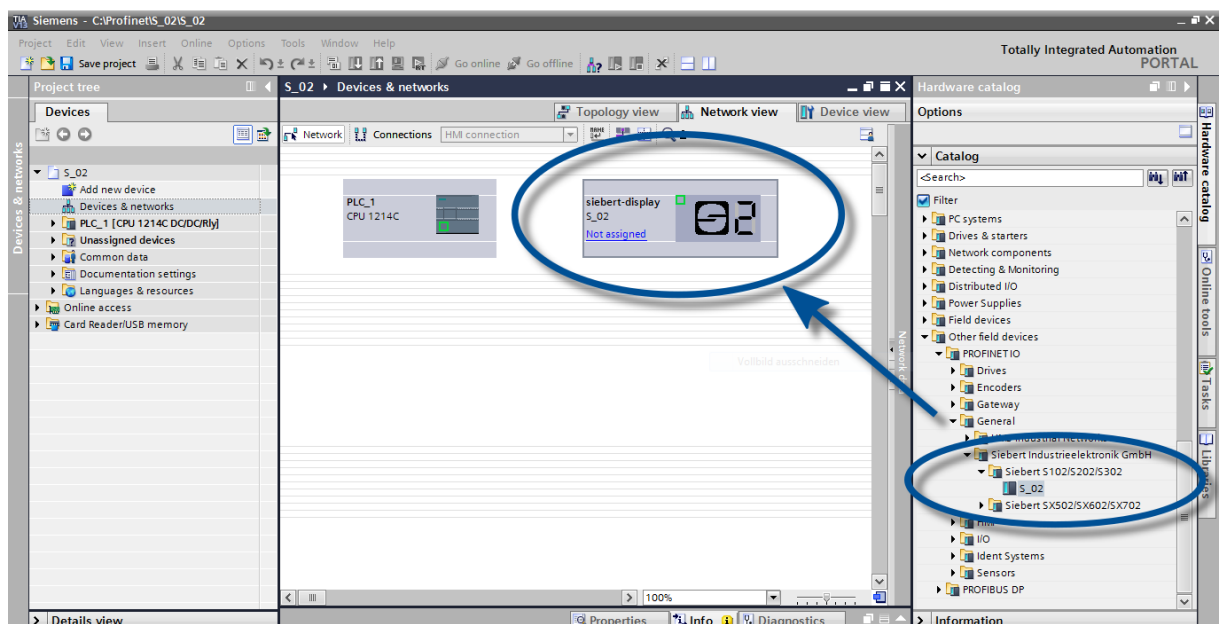
Open your project in the Engineering-Framework.

Step 2: Switch to project view

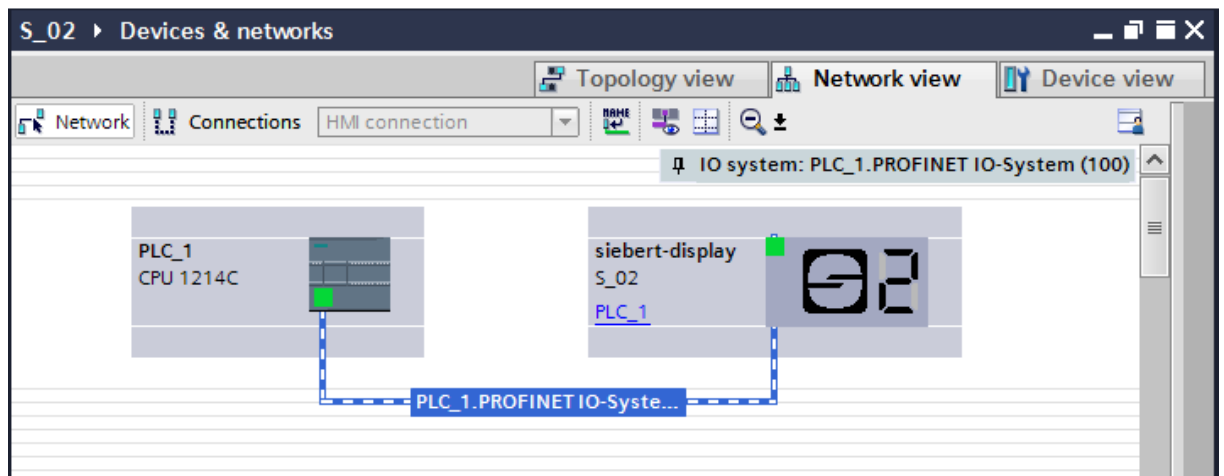
Switch to project view.

Step 3: Install the GSDML file of the ad and add the display

Install the GSDML file of the display. You find the file on the supplied data carrier or at www.siebert-group.com. After installation, the display is listed in the hardware catalog. Add the module 'siebert-display' to 'Devices & Networks/Network view'.



Step 4: Establish a connection to the display

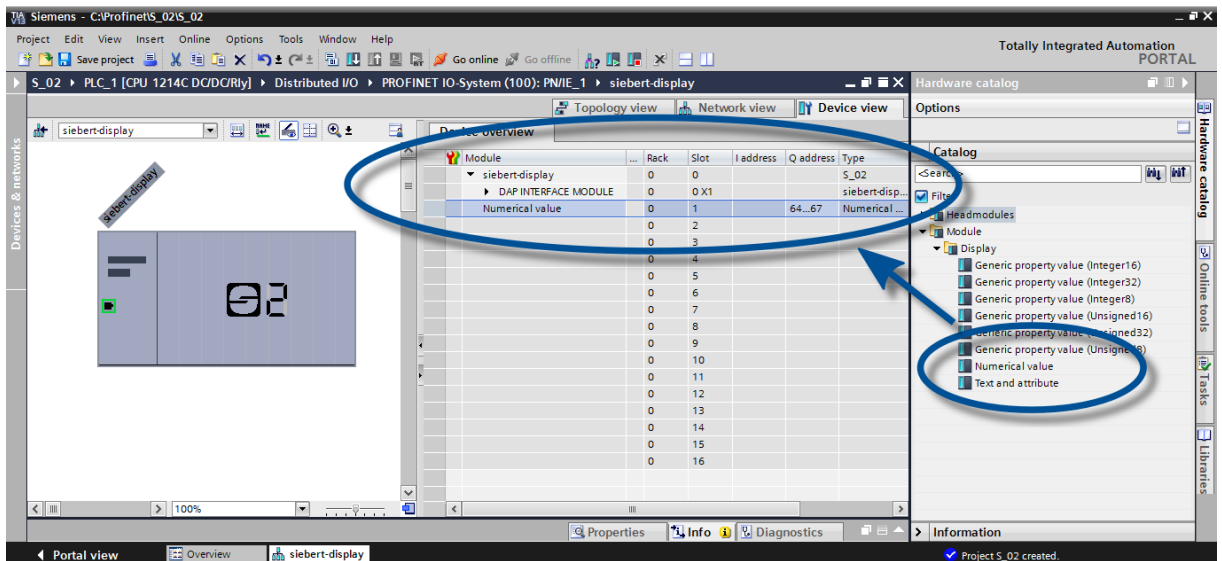


Assign the display to the desired control in the network view. Then the PROFINET connection is shown.

Step 5: Add sub-module to the display and define address range

Add the module 'Numerical Value' from the hardware catalog to the device overview.

This specifies that the display expects the values to be shown in INT32 format. The module occupies 4 bytes (in this example the addresses 64 to 67).



The screenshot shows the 'Hardware catalog' and 'Device overview' windows in Siemens TIA Portal. The 'Device overview' window displays a table of modules for the 'siebert-display S_02'. The 'Numerical value' module is highlighted, and its address range (64..67) is circled in blue. The 'Hardware catalog' window shows the 'Numerical value' module selected in the 'Display' category.

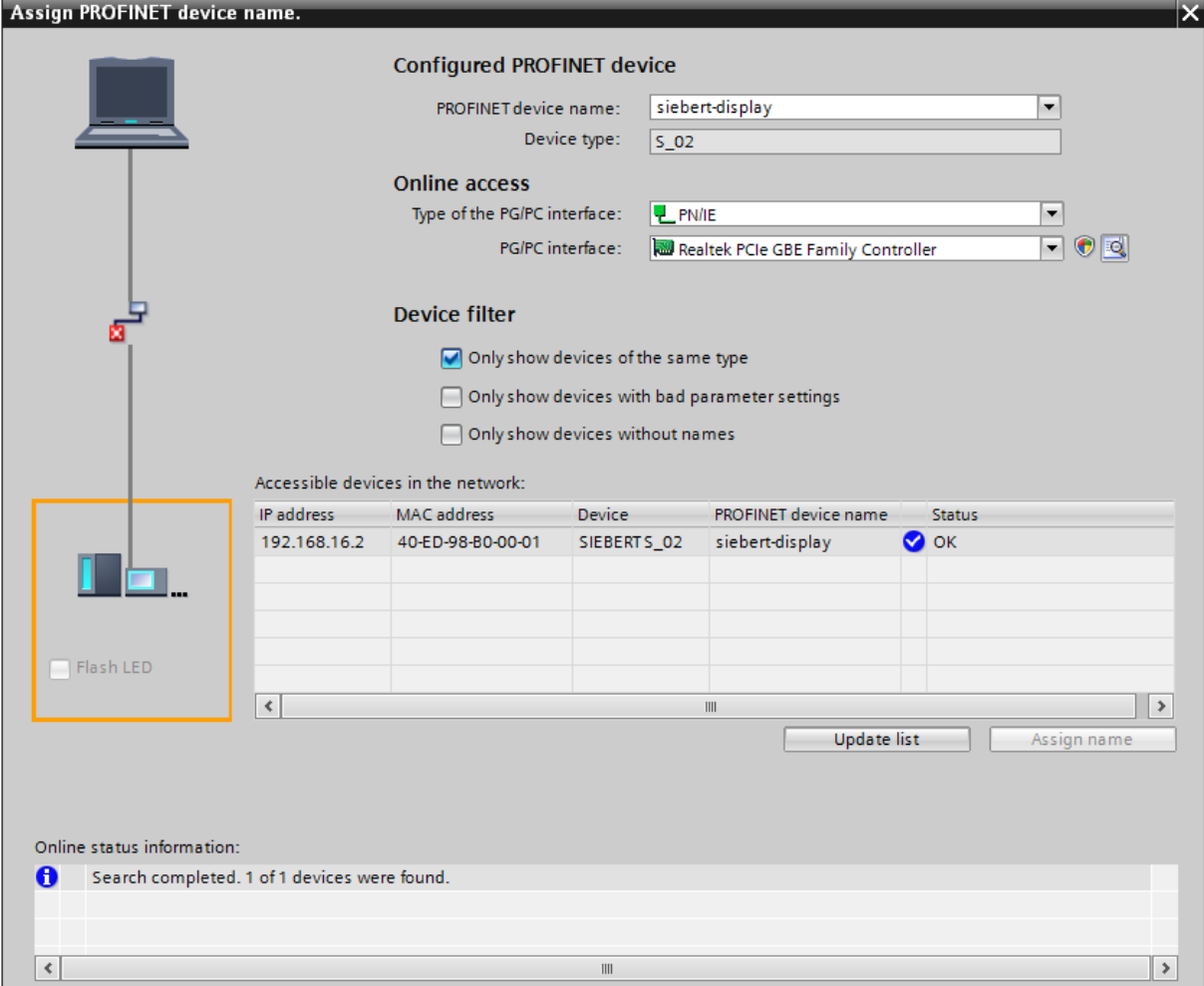
| Module | Rack | Slot | I address | Q address | Type |
|----------------------|------|------|-----------|-----------|-----------------|
| siebert-display | 0 | 0 | | | S_02 |
| DAP INTERFACE MODULE | 0 | 0 X1 | | | siebert-disp... |
| Numerical value | 0 | 1 | 64..67 | | Numerical ... |
| | 0 | 2 | | | |
| | 0 | 3 | | | |
| | 0 | 4 | | | |
| | 0 | 5 | | | |
| | 0 | 6 | | | |
| | 0 | 7 | | | |
| | 0 | 8 | | | |
| | 0 | 9 | | | |
| | 0 | 10 | | | |
| | 0 | 11 | | | |
| | 0 | 12 | | | |
| | 0 | 13 | | | |
| | 0 | 14 | | | |
| | 0 | 15 | | | |
| | 0 | 16 | | | |

You can change the name given by the TIA Portal.

Step 6: Assign a PROFINET device name to the display

Now the IP address and the device name are assigned to the display.

After the data is transferred successfully to the display, the configuration is displayed as follows in the engineering tool.



Assign PROFINET device name.

Configured PROFINET device

PROFINET device name:

Device type:

Online access

Type of the PG/PC interface:

PG/PC interface:

Device filter

Only show devices of the same type

Only show devices with bad parameter settings

Only show devices without names

Accessible devices in the network:

| IP address | MAC address | Device | PROFINET device name | Status |
|--------------|-------------------|--------------|----------------------|--|
| 192.168.16.2 | 40-ED-98-B0-00-01 | SIEBERT S_02 | siebert-display | <input checked="" type="checkbox"/> OK |
| | | | | |
| | | | | |
| | | | | |

Flash LED

Update list Assign name

Online status information:

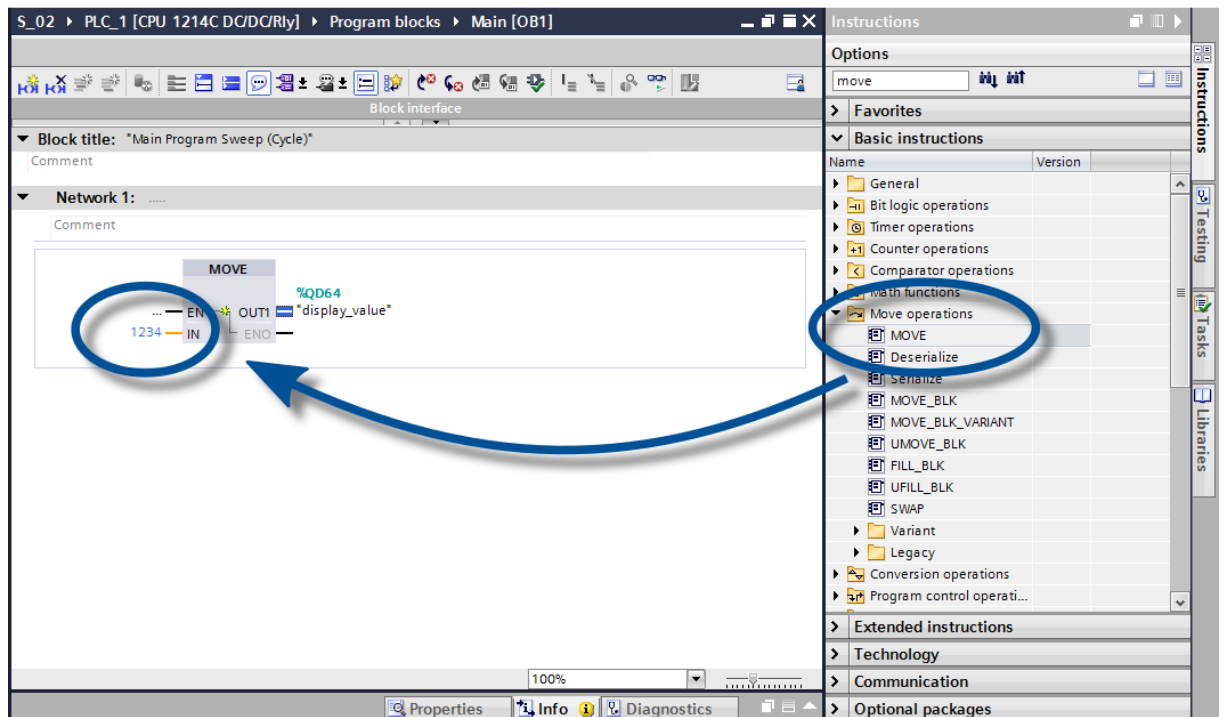
i Search completed. 1 of 1 devices were found.

Step 7: Download configuration in the controller

After the control can connect via PROFINET with the display. As soon as the connection is established the display shown the '0'. The display is now programmed to receive numerical values in INT32 format.

Step 8: Transmit data to the display

To transmit a value to the display you can for example, create a function chart with the instruction 'MOVE'. In the following screenshot the number '1234' is transmitted.



The string sent to the display can be up to 20 bytes long. The displayed bytes are dependent on the scope of the display. The not shown sequence bytes are ignored.

The attributes are binary coded. Its structure is described in the chapter 'Attributes'.

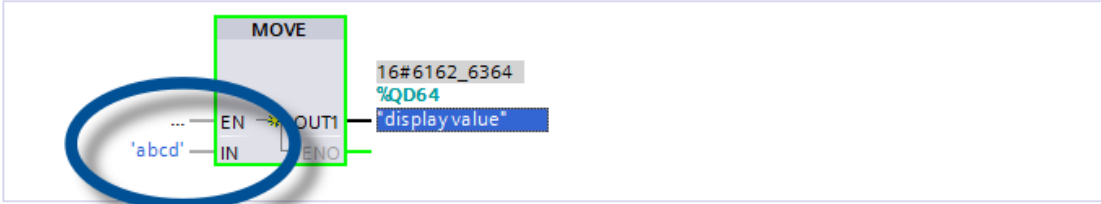
PLC programming

S102-04 ▶ PLC_1 [CPU 1214C DC/DC/Rly] ▶ Program blocks ▶ Main [OB1]

Block interface

▼ Block title: "Main Program Sweep (Cycle)"
Comment

▼ Network 1:
Comment

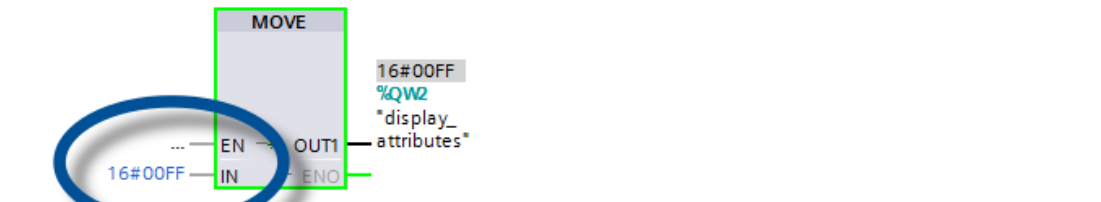


MOVE

16#6162_6364
%QD64
"display value"

EN OUT1
"abcd" IN ENO

▼ Network 2:
Comment



MOVE

16#00FF
%QW2
"display_ attributes"

EN OUT1
16#00FF IN ENO

7 Messages on the display

The data traffic via PROFINET is indicated with status LEDs on both RJ45 sockets. The meaning is the same for both ports.

| LED green | LED yellow | Meaning |
|-----------|------------|--|
| off | off | <ul style="list-style-type: none"> ▪ no power supply ▪ no network connection |
| on | ons | <ul style="list-style-type: none"> ▪ network connection exists |
| on | flashing | <ul style="list-style-type: none"> ▪ initialization phase ▪ application relation is set up |
| on | on | <ul style="list-style-type: none"> ▪ application relation is established |

If the connection can not be established or faults occur during operation the display shown the error message 'ERR'. Possible causes are IP problems due to incorrect network parameters, multiple device names, command of undefined properties or other fieldbus errors.

Once the connection has been established, the following messages can be displayed:

| With a 4-digit display | |
|------------------------|---|
| [] | Until the first time user data is received, the display shows a frame on its display alternating with the above status messages. |
| --- | The "PROFINET flashing" diagnostic function, which can be called from the engineering tool, is signaled by three horizontal lines at each position. |
| UUUU | Underflow: The value sent to the display can not be displayed on the display. For example, the value '-1500' can not be displayed on a four-digit device. |
| OOOO | Overflow: The value sent to the display can not be displayed on the display. For example, the value '-26550' can not be displayed on a four-digit device. |

8 Further settings

With the previous steps, the display shows the sent values with their default settings (factory settings).

In the numeric mode (INT32 format) these settings can be changed by changing the initialization values. These are transferred once to the display during connection setup via PROFINET.

The following setting options are available by changing the initialization values, see chapter setting the display settings during initialization (numeric operation mode only):

- Number and position of the decimal points
- Offset, scale factor (multiplier), and divisor for the conversion formula of the numerical value
- Upper and lower thresholds for automatically changing the display mode
- Luminosity of the LEDs
- Blinking in different modes when thresholds are exceeded or fallen below
- Lowering or raising the LED brightness when exceeding or falling below the thresholds
- Position of the displayed value
- Number of leading zeros

In addition, the display offers the possibility - in both operation modes (INT32 and ASCII format) - to change all previously mentioned settings as well as the setting of the basic brightness (LED brightness) in 16 steps during normal operation (see chapter setting of the display mode in normal operation mode).

9 Setting the display settings during initialization (numeric operation mode only)

Initialization parameters are loaded to the display once. They cannot be changed during operation.

Decimal points

Decimal Dots (property number 1)

The number and position of the decimal points can be defined with the help of a bit mask. For example, multiple decimal points can be used to display a date or codes.

A set bit corresponds with a set decimal point.

The least significant bit corresponds to the decimal point of the least significant digit. If, for example, the number '1234' is to be displayed with a decimal point between the 100th and the 10th digit, the bit mask must be set to the value '0x04' and '12 .34' appears on the display.

Offset, scale factor (multiplier) and divisor (property numbers 2, 3 and 12)

The formula that can be stored in the display allows you to display values in other units, such as degrees Fahrenheit in degrees Celsius, kilograms in tons, miles in kilometers, or adding an offset.

This initialization parameter consists of the values offset, scale factor (multiplier) and divisor.

| Meaning | Property number | Data type | Default value |
|--------------|-----------------|-------------------|---------------|
| Offset | 2 | SINT32 | 0 |
| Scale Factor | 3 | SINT16 | 1 |
| Divisor | 12 | UINT16 (unsigned) | 1 |

The calculation is based on the following linear function:

Displayed value = offset + scale factor (multiplier) / divisor x sent value

As a scale factor, integers are possible. Other factors can be formed by a combination of 'ScaleFactor' and 'Divisor'. For example, a multiplication with '13, 42' can be generated by the scale factor '1342' and divisor '100'.

Threshold values

Range (property numbers 4 und 5)

This initialization value defines the upper and lower thresholds at which the display automatically changes its display attribute.

| Meaning | Property number | Data type | Default values |
|-------------|-----------------|-----------|----------------|
| Upper bound | 4 | SINT32 | -2147483648 |
| Lower bound | 5 | SINT32 | -2147483648 |

No threshold values are defined in the delivery state. The default value -2147483648 (hex: 16#80000000) commands this.

If a value is received outside the defined thresholds, the display automatically changes from 'standard' to 'out of range'. As soon as a value is received within the defined limits, the display returns to standard.

Example: For a temperature value display, the display should change its display mode, both when the temperature falls below 0 degrees Celcius and when it exceeds 100 degrees Celcius. For this, the values Upper bound = 100 and Lower bound = 0 must be entered.

Flags (property number 6)

In this initialization value (type INT16), display properties are set.

See chapter Flags.

Attributes for flashing and blinking (property numbers 7 and 9)

With these initialization values, the flashing modes for the standard display and the 'out of range' display can be defined.

See chapter Flashing modes.

Format (property numbers 10 and 11)

These two initialization parameters define the alignment of the displayed values and the number of leading zeros.

| Meaning | Property number | Data type | Default values |
|--------------------------|-----------------|-----------|----------------|
| Minimum number of digits | 10 | UINT8 | 1 |
| Minimum width | 11 | UINT8 | 30 |

The minimum number of digits displayed is defined as 'Minimum number of digits'. If the value to be displayed has less digits than 'Minimum number of digits', the display is filled with zeros on the left side.

Example: For a six-digit display the 'Minimum number of digits' is set to 6. If the number '1234' is sent to the display, the display shows '001234'.

'Minimum Width' defines the minimum number of digits used for display. If the number representation contains less characters (including the sign), the space is filled with blanks on the left side.

Example: To display a number on the left-hand side, set the parameter 'Minimum Width' to '1'.

10 Flashing modes and display attributes

The display can show the values to be displayed in a plurality of brightnesses and blinking patterns, which are referred to as "display attribute".

For the initialization parameters, two blocks are defined: a block for 'standard attributes' (property number 7), the other for 'out of range attributes' (property number 9). In each block the values 0%, 25%, 50% and 100% can be entered.

So, for example, the following typical display effects can be defined:

| Effect | 1/4 | 2/4 | 3/4 | 4/4 | Attribute value |
|------------------------------|------|------|------|------|-----------------|
| 25% of the basic brightness | 25% | 25% | 25% | 25% | 16#0055 |
| 50% of the basic brightness | 50% | 50% | 50% | 50% | 16#00AA |
| 100% of the basic brightness | 100% | 100% | 100% | 100% | 16#00FF |
| Pulsation | 0% | 0% | 0% | 0% | 16#0000 |
| Brief flashing | 0% | 0% | 0% | 100% | 16#0003 |
| Fast flashing | 0% | 100% | 0% | 100% | 16#0033 |
| Slow flashing | 0% | 0% | 100% | 100% | 16#000F |
| Short darkening | 0% | 100% | 100% | 100% | 16#003F |
| Low beaming | 0% | 25% | 50% | 100% | 16#001B |
| High beaming | 100% | 50% | 25% | 0% | 16#00E4 |

If the value '0%' is entered in all four fields, the display switches to a pulsating display. This prevents an inadvertent dark switching.

In the case of displays with multicolor LEDs (red and green), the attribute for the red color is set with the least significant byte and the attribute for the green color with the next higher byte. The meaning of the bytes for red and green is identical.

With the same attributes for red and green the display shines orange. Diverse mixed colors, flashing effects and color changing effects can be defined by different attributes, for example:

| | |
|---|---------|
| 25% of the basic brightness, orange | 16#5555 |
| 50% of the basic brightness, orange | 16#AAAA |
| 100% of the basic brightness, orange | 16#FFFF |
| Slow flashing (off – on), red | 16#000F |
| Slow inverse flashing (on – off), green | 16#F000 |
| Flashing red/green alternately | 16#F00F |

The dark switching is possible by the global 'property 0'. Here the decimal point of the least significant decade flashes.

11 Flags

| Bit number | | | | | | | | | | Meaning | Default | |
|------------|---|---|---|---|---|---|---|---|---|---------|---|---|
| 31...9 | 8 | 7 | 6 | 5 | 4 | 3 | 2 | 1 | 0 | | | |
| : | : | : | : | : | : | : | : | : | : | 0 | Circumferential frame off | |
| : | : | : | : | : | : | : | : | : | : | 1 | Circumferential frame on | X |
| : | : | : | : | : | : | : | : | : | : | 0 | Underflow off | |
| : | : | : | : | : | : | : | : | : | : | 1 | Underflow on | X |
| : | : | : | : | : | : | : | : | : | : | 0 | Overflow off | |
| : | : | : | : | : | : | : | : | : | : | 1 | Overflow on | X |
| : | : | : | : | : | : | : | : | : | : | 0 | Invalid initial value off | X |
| : | : | : | : | : | : | : | : | : | : | 1 | Invalid initial value on | |
| : | : | : | : | : | : | : | : | : | : | 0 | Smart-Dot-Function off | |
| : | : | : | : | : | : | : | : | : | : | 1 | Smart-Dot-Function on | X |
| : | : | : | : | : | : | : | : | : | : | 0 0 | The decimal places are truncated.* | |
| : | : | : | : | : | : | : | : | : | : | 0 1 | The decimal places are rounded up* | |
| : | : | : | : | : | : | : | : | : | : | 1 0 | The decimal places are rounded down.* | |
| : | : | : | : | : | : | : | : | : | : | 1 1 | The decimal places are rounded commercially.* | X |
| : | : | : | : | : | : | : | : | : | : | 0 | Leading zeros off | |
| : | : | : | : | : | : | : | : | : | : | 1 | Leading zeros on | X |
| : | : | : | : | : | : | : | : | : | : | 0 | Value is displayed in decimal form | X |
| : | : | : | : | : | : | : | : | : | : | 1 | Value is displayed in hexadecimal form | |
| : | : | : | : | : | : | : | : | : | : | 0 | Without function. The bits are to be set to '0' | X |

* only with activated Smart-Dot-Function

Leading zeros

On the places in front of the value \square is shown automatically

Smart-Dot-Function

The display automatically moves the decimal point so that the decimal value is displayed completely when the value exceeds the maximum display capacity.

Invalid initial value

If the value sent to the display is invalid, Ξ is shown on each position.

Overflow

If the value sent to the display is that large that it cannot be displayed on the display \square is shown on each position on the upper segments.

If the overflow function is deactivated, the value that can be displayed as large as possible is displayed for a larger number than can be displayed. For example: numbers larger or equal 9999 are always displayed with '9999' on a four-digit display.

Underflow

If the value sent to the display is that small that it cannot be displayed on the display \sqcup is shown on each position of the lower segments.

If the underflow function is deactivated the value that can be displayed as small as possible is displayed for a smaller number than can be displayed. For example: numbers smaller or equal -9999 are always displayed with '-999' on a four-digit display.

Circumferential frame

Until user data is received for the first time the display alternately displays $\square \Xi \Xi \square$ or various status messages on its display.

12 Setting the display mode in normal operation

The settings defined in chapter 'Setting the display settings during initialization' are defined in the engineering tool as initialization parameters and sent to the display once during the initialization of PROFINET. These settings can not be changed during normal operation.

The displays also allow to change these parameters during normal operation. Up to four 'generic property value modules' can be added.

A property number is be assigned to each of these modules. The display then shows the information sent via this module via PROFINET on the desired parameter.

Setting the basic brightness (luminosity of the LEDs)

The basic brightness of the display is controlled with the following 'global properties':

| Global property number | Meaning | Allowed values |
|------------------------|---------------------------|---|
| 1 | Select luminosity value | 0 = Standard luminosity (default) 1 = Out of range luminosity |
| 2 | Standard luminosity | 0 = off : 8 = middle luminosity (default) : 15 = maximum luminosity |
| 3 | 'out of range'-luminosity | 0 = off : 8 = middle luminosity (default) : 15 = maximum luminosity |
| 4 | Blanking of the display | 0 = Display is dark all others: display lights (default) |

Example: To darken the display at any time via the PLC the module 'generic property value (Integer8)' is added. The property-group 'global properties' and the property number '4' are set in the engineering tool in the initialization parameters of this module.

During operation, a number is transferred to this module during cyclic data transmission. If this number is set to '0', the display will be dark. During darkness, the decimal point of the least significant decade flashes. As soon as a value other than '0' is transmitted, the display switches its display on.

Setting of the display modes

With these setting options, the representation of the number which is transmitted cyclically via PROFINET is influenced. To control a specific property, a 'generic property value module' is added.

In the parameters of this module, in the Property-group the property 'Property of display field' is selected and in the field 'Property-number the desired property is entered in the 'Property number' field.

The description of the properties can be found in chapter: Setting the display mode during initialization (numeric mode only).

| Property of display field number | Property | Operation mode |
|----------------------------------|-----------------------------------|----------------------|
| 1 | Decimal Dots | numeric (INT32) |
| 2 | Offset | numeric (INT32) |
| 3 | Scale Factor | numeric (INT32) |
| 4 | Range – Upper bound | numeric (INT32) |
| 5 | Range – Lower bound | numeric (INT32) |
| 6 | Flags | numeric (INT32) |
| 7 | Standard-attribute | numeric (INT32) |
| 8 | Text-attribute | alphanumeric (ASCII) |
| 9 | out of range-attribute | numeric (INT32) |
| 10 | Format – Minimum number of digits | numeric (INT32) |
| 11 | Format – Minimum width | numeric (INT32) |
| 12 | Divisor | numeric (INT32) |

13 Technical data

Fieldbus

| | |
|-------------------|--|
| Interface | PROFINET IO RT, conformance class CC-B |
| MAC address | The MAC address for the PROFINET coupling is on the top side of the device |
| Integrated switch | PROFINET IO IRT, conformance class CC-C |

Power supply

The screw-type terminals for the power supply are located on the power supply unit in the bottom section of the housing. They have the following designations:

| | |
|---|-------------|
| Devices for a power supply 115 V AC or 230 V AC | L, N and PE |
| Devices for a power supply 24 V DC | +, – and PE |

Housing colors

| | |
|----------------|---------------------|
| Case front | RAL 5002ultramarine |
| Case rear part | RAL 7035 light grey |

Ambient conditions

| | |
|-----------------------|-------------------------------------|
| Operating temperature | 0...55 °C, with heating -20...55 °C |
| Storage temperature | -30...85 °C |
| Relative humidity | max. 95 % (non condensing) |

Unit properties

The model designation is structured as follows

| | | | | | | | | | | | | |
|--|-----|---------|---|---------|---|---------|---|-----------------|---|---------|---|---------|
| S302 | - | [] [] | / | [] [] | / | [] [] | - | [] [] [] [] | / | [] [] | - | [] [] |
| No dimension symbol | 0 | : | : | : | : | : | : | : | : | : | : | : |
| Dimension symbol | F | : | : | : | : | : | : | : | : | : | : | : |
| 1 digit | 1 | : | : | : | : | : | : | : | : | : | : | : |
| 2 digits | 2 | : | : | : | : | : | : | : | : | : | : | : |
| ↓ | ↓ | : | : | : | : | : | : | : | : | : | : | : |
| 8 digits | 8 | : | : | : | : | : | : | : | : | : | : | : |
| Character height 57 mm | 0 6 | : | : | : | : | : | : | : | : | : | : | : |
| Character height 100 mm | 1 0 | : | : | : | : | : | : | : | : | : | : | : |
| Character height 160 mm | 1 6 | : | : | : | : | : | : | : | : | : | : | : |
| Character height 250 mm | 2 5 | : | : | : | : | : | : | : | : | : | : | : |
| LED standard | 0 | : | : | : | : | : | : | : | : | : | : | : |
| LED for outdoor use | 2 | : | : | : | : | : | : | : | : | : | : | : |
| Character color red | R | : | : | : | : | : | : | : | : | : | : | : |
| Character color green | G | : | : | : | : | : | : | : | : | : | : | : |
| Character color white | W | : | : | : | : | : | : | : | : | : | : | : |
| Character color red/green/orange switchable | M | : | : | : | : | : | : | : | : | : | : | : |
| Display readable on one side | 1 | : | : | : | : | : | : | : | : | : | : | : |
| Display readable on both sides | 2 | : | : | : | : | : | : | : | : | : | : | : |
| Housing Steel sheet, powder-coated | 0 | : | : | : | : | : | : | : | : | : | : | : |
| Housing Steel sheet, 2-layer powder-coated | 1 | : | : | : | : | : | : | : | : | : | : | : |
| Housing Stainless steel V2A, powder-coated | 2 | : | : | : | : | : | : | : | : | : | : | : |
| Housing Stainless steel V2A, brushed | 3 | : | : | : | : | : | : | : | : | : | : | : |
| Housing Stainless steel V4A, brushed | 5 | : | : | : | : | : | : | : | : | : | : | : |
| Protection type IP54 | 0 | : | : | : | : | : | : | : | : | : | : | : |
| Protection type IP65 | 1 | : | : | : | : | : | : | : | : | : | : | : |
| Protection type IP54 with climate adjustment | 2 | : | : | : | : | : | : | : | : | : | : | : |

| | | | | | |
|---|---|---|---|---|-----|
| Protection type IP54 with climate adjustment and heating | 4 | : | : | : | : |
| | | : | : | : | : |
| Wall mounting, Cable entry point from the bottom | 0 | : | : | : | : |
| Wall mounting, Cable entry point from the top | 1 | : | : | : | : |
| Hanging installation, Cable entry point from the bottom | 2 | : | : | : | : |
| Hanging installation, Cable entry point from the top | 3 | : | : | : | : |
| Wall- and Hanging installation, Cable entry point from the bottom | 4 | : | : | : | : |
| Wall- and Hanging installation, Cable entry point from the top | 5 | : | : | : | : |
| | | : | : | : | : |
| Power supply 230 V AC $\pm 15\%$, 50 Hz | | | | A | : |
| Power supply 24 V DC $\pm 15\%$ | | | | B | : |
| Power supply 115 V AC $\pm 15\%$, 60 Hz | | | | C | : |
| | | | | | : |
| Interface | | | | | N 0 |

Max. power consumption

| Units with one-sided display | [W] ¹⁾ |
|------------------------------|-------------------|
| 1 digit | |
| S302-x1/10/xx-1xx/xx-xx | 8 |
| S302-x1/16/xx-1xx/xx-xx | 12 |
| S302-x1/25/xx-1xx/xx-xx | 14 |
| 2 digits | |
| S302-x2/06/xx-1xx/xx-xx | 8 |
| S302-x2/10/xx-1xx/xx-xx | 8 |
| S302-x2/16/xx-1xx/xx-xx | 12 |
| S302-x2/25/xx-1xx/xx-xx | 16 |
| 3 digits | |
| S302-x3/06/xx-1xx/xx-xx | 9 |
| S302-x3/10/xx-1xx/xx-xx | 9 |
| S302-x3/16/xx-1xx/xx-xx | 13 |
| S302-x3/25/xx-1xx/xx-xx | 18 |
| 4 digits | |
| S302-x4/06/xx-1xx/xx-xx | 10 |
| S302-x4/10/xx-1xx/xx-xx | 10 |
| S302-x4/16/xx-1xx/xx-xx | 14 |
| S302-x4/25/xx-1xx/xx-xx | 20 |
| 5 digits | |
| S302-x5/06/xx-1xx/xx-xx | 11 |
| S302-x5/10/xx-1xx/xx-xx | 11 |
| S302-x5/16/xx-1xx/xx-xx | 15 |
| S302-x5/25/xx-1xx/xx-xx | 22 |
| 6 digits | |
| S302-x6/06/xx-1xx/xx-xx | 10 |
| S302-x6/10/xx-1xx/xx-xx | 10 |
| S302-x6/16/xx-1xx/xx-xx | 14 |
| S302-x6/25/xx-1xx/xx-xx | 22 |
| 7 digits | |
| S302-x7/06/xx-1xx/xx-xx | 13 |
| S302-x7/10/xx-1xx/xx-xx | 13 |
| S302-x7/16/xx-1xx/xx-xx | 17 |
| S302-x7/25/xx-1xx/xx-xx | 26 |
| 8 digits | |
| S302-x8/06/xx-1xx/xx-xx | 14 |
| S302-x8/10/xx-1xx/xx-xx | 15 |

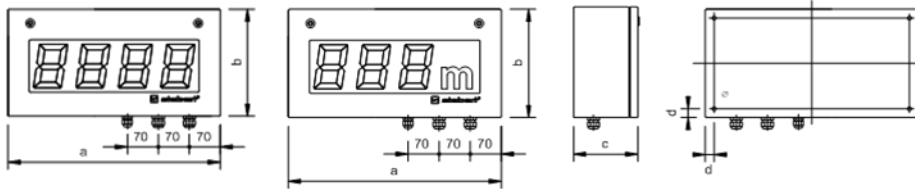
| Units with double-sided display | [W] ¹⁾ |
|---------------------------------|-------------------|
| 1 digit | |
| S302-x1/10/xx-2xx/xx-xx | 12 |
| S302-x1/16/xx-2xx/xx-xx | 16 |
| S302-x1/25/xx-2xx/xx-xx | 18 |
| 2 digits | |
| S302-x2/06/xx-2xx/xx-xx | 12 |
| S302-x2/10/xx-2xx/xx-xx | 12 |
| S302-x2/16/xx-2xx/xx-xx | 16 |
| S302-x2/25/xx-2xx/xx-xx | 20 |
| 3 digits | |
| S302-x3/06/xx-2xx/xx-xx | 13 |
| S302-x3/10/xx-2xx/xx-xx | 13 |
| S302-x3/16/xx-2xx/xx-xx | 17 |
| S302-x3/25/xx-2xx/xx-xx | 22 |
| 4 digits | |
| S302-x4/06/xx-2xx/xx-xx | 14 |
| S302-x4/10/xx-2xx/xx-xx | 14 |
| S302-x4/16/xx-2xx/xx-xx | 18 |
| S302-x4/25/xx-2xx/xx-xx | 24 |
| 5 digits | |
| S302-x5/06/xx-2xx/xx-xx | 15 |
| S302-x5/10/xx-2xx/xx-xx | 15 |
| S302-x5/16/xx-2xx/xx-xx | 19 |
| S302-x5/25/xx-2xx/xx-xx | 26 |
| 6 digits | |
| S302-x6/06/xx-2xx/xx-xx | 16 |
| S302-x6/10/xx-2xx/xx-xx | 16 |
| S302-x6/16/xx-2xx/xx-xx | 20 |
| S302-x6/25/xx-2xx/xx-xx | 28 |
| 7 digits | |
| S302-x7/06/xx-2xx/xx-xx | 17 |
| S302-x7/10/xx-2xx/xx-xx | 17 |
| S302-x7/16/xx-2xx/xx-xx | 21 |
| S302-x7/25/xx-2xx/xx-xx | 30 |
| 8 digits | |
| S302-x8/06/xx-2xx/xx-xx | 18 |
| S302-x8/10/xx-2xx/xx-xx | 19 |

¹⁾ The values given are approximate values. Appliances with built-in heating have, depending on the size of the appliance approx. 10 W (approx. 30 W for appliances with an operating voltage of 24 V DC $\pm 15\%$) higher power consumption. Devices in the S302-xx/xx/0W-xxx/xx-xx device version (white LED) have an approx. 20% higher power consumption, in device version S302-xx/xx/2x-xxx/xx-xx (LEDs for outdoor use) the factor is approx. 2...2.5..

Dimensions and weights

Units with one-sided display

The following figure shows unit versions S302-04/10/4x-1xx/xx-xx and S302-F3/10/4x-1xx/xx-xx representing the other unit versions listed in the following table.

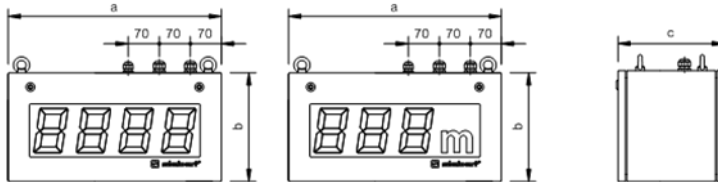


| | | a [mm] | b [mm] | c [mm] | d [mm] | Ø [mm] | Weight [kg] ¹⁾ |
|-----------------------------|-------------------------|--------|--------|--------|--------|--------|---------------------------|
| 1 digit | | | | | | | |
| S302-01/10/xx-1xx/xx-xx | | 330 | 245 | 110 | 16 | 7 | 6 |
| S302-01/16/xx-1xx/xx-xx | | 390 | 300 | 110 | 20 | 9 | 7 |
| S302-01/25/xx-1xx/xx-xx | | 570 | 400 | 110 | 20 | 9 | 11 |
| 2 digits | | | | | | | |
| 1 digit + dimension | | | | | | | |
| S302-02/06/xx-1xx/xx-xx | - | 300 | 185 | 110 | 16 | 7 | 5 |
| S302-02/10/xx-1xx/xx-xx | S302-F1/10/xx-1xx/xx-xx | 330 | 245 | 110 | 16 | 7 | 6 |
| S302-02/16/xx-1xx/xx-xx | S302-F1/16/xx-1xx/xx-xx | 390 | 300 | 110 | 20 | 9 | 7 |
| S302-02/25/xx-1xx/xx-xx | S302-F1/25/xx-1xx/xx-xx | 570 | 400 | 110 | 20 | 9 | 11 |
| 3 digits | | | | | | | |
| 2 digits + dimension | | | | | | | |
| S302-03/06/xx-1xx/xx-xx | S302-F2/06/xx-1xx/xx-xx | 300 | 185 | 110 | 16 | 7 | 5 |
| S302-03/10/xx-1xx/xx-xx | S302-F2/10/xx-1xx/xx-xx | 480 | 245 | 110 | 16 | 7 | 8 |
| S302-03/16/xx-1xx/xx-xx | S302-F2/16/xx-1xx/xx-xx | 670 | 300 | 110 | 20 | 9 | 11 |
| S302-03/25/xx-1xx/xx-xx | S302-F2/25/xx-1xx/xx-xx | 1030 | 400 | 110 | 20 | 9 | 18 |
| 4 digits | | | | | | | |
| 3 digits + dimension | | | | | | | |
| S302-04/06/xx-1xx/xx-xx | S302-F3/06/xx-1xx/xx-xx | 300 | 185 | 110 | 16 | 7 | 5 |
| S302-04/10/xx-1xx/xx-xx | S302-F3/10/xx-1xx/xx-xx | 480 | 245 | 110 | 16 | 7 | 8 |
| S302-04/16/xx-1xx/xx-xx | S302-F3/16/xx-1xx/xx-xx | 670 | 300 | 110 | 20 | 9 | 11 |
| S302-04/25/xx-1xx/xx-xx | S302-F3/25/xx-1xx/xx-xx | 1030 | 400 | 110 | 20 | 9 | 18 |
| 5 digits | | | | | | | |
| 4 digits + dimension | | | | | | | |
| S302-05/06/xx-1xx/xx-xx | S302-F4/06/xx-1xx/xx-xx | 400 | 185 | 110 | 16 | 7 | 6 |
| S302-05/10/xx-1xx/xx-xx | S302-F4/10/xx-1xx/xx-xx | 680 | 245 | 110 | 16 | 7 | 10 |
| S302-05/16/xx-1xx/xx-xx | S302-F4/16/xx-1xx/xx-xx | 960 | 300 | 110 | 20 | 9 | 14 |
| S302-05/25/xx-1xx/xx-xx | S302-F4/25/xx-1xx/xx-xx | 1500 | 400 | 110 | 20 | 9 | 24 |
| 6 digits | | | | | | | |
| 5 digits + dimension | | | | | | | |
| S302-06/06/xx-1xx/xx-xx | S302-F5/06/xx-1xx/xx-xx | 400 | 185 | 110 | 16 | 7 | 6 |
| S302-06/10/xx-1xx/xx-xx | S302-F5/10/xx-1xx/xx-xx | 680 | 245 | 110 | 16 | 7 | 10 |
| S302-06/16/xx-1xx/xx-xx | S302-F5/16/xx-1xx/xx-xx | 960 | 300 | 110 | 20 | 9 | 14 |
| S302-06/25/xx-1xx/xx-xx | S302-F5/25/xx-1xx/xx-xx | 1500 | 400 | 110 | 20 | 9 | 24 |
| 7 digits | | | | | | | |
| 6 digits + dimension | | | | | | | |
| - | S302-F6/03/xx-1xx/xx-xx | 300 | 185 | 110 | 16 | 7 | 5 |
| S302-07/06/xx-1xx/xx-xx | S302-F6/06/xx-1xx/xx-xx | 510 | 185 | 110 | 16 | 7 | 7 |
| S302-07/10/xx-1xx/xx-xx | S302-F6/10/xx-1xx/xx-xx | 870 | 245 | 110 | 16 | 7 | 12 |
| S302-07/16/xx-1xx/xx-xx | S302-F6/16/xx-1xx/xx-xx | 1100 | 300 | 110 | 20 | 9 | 16 |
| S302-07/25/xx-1xx/xx-xx | S302-F6/25/xx-1xx/xx-xx | 1730 | 400 | 110 | 20 | 9 | 28 |
| 8 digits | | | | | | | |
| 7 digits + dimension | | | | | | | |
| S302-08/06/xx-1xx/xx-xx | S302-F7/06/xx-1xx/xx-xx | 510 | 185 | 110 | 32 | 7 | 7 |
| S302-08/10/xx-1xx/xx-xx | S302-F7/10/xx-1xx/xx-xx | 870 | 245 | 110 | 32 | 7 | 12 |

¹⁾ The figures shown are approximate values.

Units with double-sided display

The following figure shows unit versions S302-04/10/4x-2xx/xx-xx and S302-F3/10/4x-2xx/xx-xx representing the other unit versions listed in the following table.



Units with 57mm character height (S302-xx/06/xx-2xx/xx-xx) have 2 instead of 4 eyelets.

| 1 digit | | a [mm] | b [mm] | c [mm] | Weight [kg] ¹⁾ |
|-------------------------|-----------------------------|--------|--------|--------|---------------------------|
| S302-01/10/xx-2xx/xx-xx | | 330 | 245 | 170 | 9 |
| S302-01/16/xx-2xx/xx-xx | | 390 | 300 | 170 | 11 |
| S302-01/25/xx-2xx/xx-xx | | 570 | 400 | 170 | 17 |
| 2 digits | 1 digit + dimension | | | | |
| S302-02/06/xx-2xx/xx-xx | - | 300 | 185 | 170 | 7 |
| S302-02/10/xx-2xx/xx-xx | S302-F1/10/xx-2xx/xx-xx | 330 | 245 | 170 | 9 |
| S302-02/16/xx-2xx/xx-xx | S302-F1/16/xx-2xx/xx-xx | 390 | 300 | 170 | 11 |
| S302-02/25/xx-2xx/xx-xx | S302-F1/25/xx-2xx/xx-xx | 570 | 400 | 170 | 17 |
| 3 digits | 2 digits + dimension | | | | |
| S302-03/06/xx-2xx/xx-xx | S302-F2/06/xx-2xx/xx-xx | 300 | 185 | 170 | 7 |
| S302-03/10/xx-2xx/xx-xx | S302-F2/10/xx-2xx/xx-xx | 480 | 245 | 170 | 12 |
| S302-03/16/xx-2xx/xx-xx | S302-F2/16/xx-2xx/xx-xx | 670 | 300 | 170 | 17 |
| S302-03/25/xx-2xx/xx-xx | S302-F2/25/xx-2xx/xx-xx | 1030 | 400 | 170 | 27 |
| 4 digits | 3 digits + dimension | | | | |
| S302-04/06/xx-2xx/xx-xx | S302-F3/06/xx-2xx/xx-xx | 300 | 185 | 170 | 7 |
| S302-04/10/xx-2xx/xx-xx | S302-F3/10/xx-2xx/xx-xx | 480 | 245 | 170 | 12 |
| S302-04/16/xx-2xx/xx-xx | S302-F3/16/xx-2xx/xx-xx | 670 | 300 | 170 | 17 |
| S302-04/25/xx-2xx/xx-xx | S302-F3/25/xx-2xx/xx-xx | 1030 | 400 | 170 | 27 |
| 5 digits | 4 digits + dimension | | | | |
| S302-05/06/xx-2xx/xx-xx | S302-F4/06/xx-2xx/xx-xx | 400 | 185 | 170 | 8 |
| S302-05/10/xx-2xx/xx-xx | S302-F4/10/xx-2xx/xx-xx | 680 | 245 | 170 | 15 |
| S302-05/16/xx-2xx/xx-xx | S302-F4/16/xx-2xx/xx-xx | 960 | 300 | 170 | 21 |
| S302-05/25/xx-2xx/xx-xx | S302-F4/25/xx-2xx/xx-xx | 1500 | 400 | 170 | 36 |
| 6 digits | 5 digits + dimension | | | | |
| S302-06/06/xx-2xx/xx-xx | S302-F5/06/xx-2xx/xx-xx | 400 | 185 | 170 | 8 |
| S302-06/10/xx-2xx/xx-xx | S302-F5/10/xx-2xx/xx-xx | 680 | 245 | 170 | 15 |
| S302-06/16/xx-2xx/xx-xx | S302-F5/16/xx-2xx/xx-xx | 960 | 300 | 170 | 21 |
| S302-06/25/xx-2xx/xx-xx | S302-F5/25/xx-2xx/xx-xx | 1500 | 400 | 170 | 36 |
| 7 digits | 6 digits + dimension | | | | |
| - | S302-F6/03/xx-2xx/xx-xx | 300 | 185 | 170 | 7 |
| S302-07/06/xx-2xx/xx-xx | S302-F6/06/xx-2xx/xx-xx | 510 | 185 | 170 | 9 |
| S302-07/10/xx-2xx/xx-xx | S302-F6/10/xx-2xx/xx-xx | 870 | 245 | 170 | 18 |
| S302-07/16/xx-2xx/xx-xx | S302-F6/16/xx-2xx/xx-xx | 1100 | 300 | 170 | 24 |
| S302-07/25/xx-2xx/xx-xx | S302-F6/25/xx-2xx/xx-xx | 1730 | 400 | 170 | 42 |
| 8 digits | 7 digits + dimension | | | | |
| S302-08/06/xx-2xx/xx-xx | S302-F7/06/xx-2xx/xx-xx | 510 | 185 | 170 | 9 |
| S302-08/10/xx-2xx/xx-xx | S302-F7/10/xx-2xx/xx-xx | 870 | 245 | 170 | 18 |

¹⁾ The figures shown are approximate values.